



BIOETHANOL FIREPLACES

Danish design & production since 2008



INDEX

Page 4:	Decoflame ApS
Page 6:	Decoflame Burners
Page 7:	Functionality
Page 8:	Premium Collection
Page 10:	Basic Collection
Page 14:	Ready-Made Collection
Page 16:	Outdoor Collection
Page 18:	Bioethanol
Page 20:	Bioethanol fireplaces
Page 23:	General Information

In this leaflet a selection of Decoflame bioethanol fireplaces is to be found; both indoor and outdoor fireplaces - with manual and electronic burners.

Technical information about the fireplaces, which are designed and manufactured by Decoflame, is listed on the last pages.

Please contact us if you have a specific request - or questions about our fireplaces.

Info@decoflame.dk or telephone +45 9630 4800.



Montreal e-Ribbon
integrated into bar- wall
with Automatic Tank
Fillingsystem



Customized table with Nice Round Table-Top



Nice Table -Top Lounge & Tower

DECOFLAME

A Danish pioneer within biofireplaces



Kjell Thomsen, CEO of Decoflame.

First, I would like to thank you for reading this page and to immerse yourself into the spirit and thoughts of Decoflame.

My passion for timeless design – with quality and safety in mind – began in 2008. The first Decoflame biofireplace was produced in a minor workshop in Nørresundby, Denmark.

My vision of producing the fireplaces was to create a very simplified and amazing stylish Nordic design.

Eleven years later my vision of Decoflame keeps growing stronger. Today the company consists of 35 employees and situated in beautiful locations and premises in Vestbjerg, Denmark. At the location in Vestbjerg, a spacious showroom with inspiration and an impressive numbers of fireplaces, is to be found.

I am certain that our fireplaces can become a part of your home or workplace.

Today, we have three types of burners, which can be integrated in almost every fireplace with an infinite numbers of combination possibilities. With our patented electronical system it is possible to control the flame intensity via Bluetooth/app on the electronic burners.

I have a dedicated mantra...
“Everything is possible. Nothing is impossible”
We can make your dreams come true.

Finally, I wish you a great reading with this leaflet and look forward to servicing you.

Yours sincerely,
Kjell Thomsen



DECOFLAME BURNERS

Manual, Denver e-Ribbon Basic and Denver e-Ribbon

Manual burner:

Many of the models in the Premium Collection, Ready Made Collection and Outdoor Collection are equipped with a manual burner where it is possible to customize several of the models.

The manual burner is both easy to operate and maintain. After manually filling and igniting of the bioethanol, the flames start to form beautifully within 10 minutes. On several of the models it is possible to adjust the flame intensity manually. This applies, for example, to the following models: Montreal, Orlando, New York, Atlantic, Ascot and Ellipse.

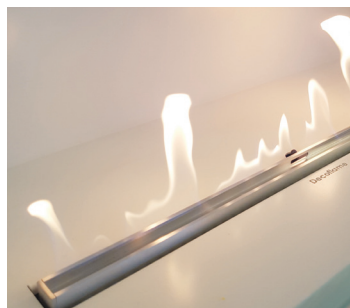


Denver e-Ribbon Basic:

An automatic burner that comes in 3 standard sizes.

It is equipped with various safety features like spillage- and temperature sensors. Intuitive operation via the control panel, the remote control or DecoFlame App provides an user-friendly approach.

The fireplace can easily be turned on and off, control the flame intensity and check the remaining burningtime, as well as the fuel consumption of the fireplace. After the fireplace has been turned on, it only takes few minutes before one can enjoy the vivid and beautiful flames.



Denver e-Ribbon:

The Denver e-Ribbon is a premium model with an automatic burner. It can be customized and comes with a touch display and larger fuel tank. The intuitive operation via the touch panel, the remote control or DecoFlame App provides an user-friendly approach.

The fireplace can easily be turned on and off and the flame intensity can be controlled as well as it is possible to check the remaining burning time and the fuel consumption of the fireplace. It is equipped with various safety features like spillage and temperature sensors. In addition, a TV-Temperature sensor, a Smart-Home Connection and an External Tank Filling System - that automatically fills the tank - are available.

This type of burner is ideal for e.g. large companies or the hospitality sector, with several employees responsible for the operation of the fireplace.



FUNCTIONALITY

The electronical bioethanol fireplaces



With the Decoflame App you can ...

- ▶ Regulate flame intensity
- ▶ Check fuel consumption
- ▶ Check the remaining combustion time
- ▶ Check the remaining fuel level
- ▶ Switch on and off the fireplace
- ▶ Set " timer " auto power off function



How the
bioethanol
fireplace works

The biofireplace:

- ▶ Danish craftsmanship and quality
- ▶ High quality and operational security
- ▶ Equipped with a patented burner system
- ▶ No chimney or ventilation required
- ▶ Smoke-, ash- and soot free
- ▶ Easy to install, operate and maintain
- ▶ Equipped with safety features
- ▶ Optional glass front
- ▶ Uses environmentally-friendly bioethanol

MADE
IN
DENMARK

CEVB
TECHNOLOGY
PATENT

DESIGN
REGISTERED

BIO
FUEL

APP
CONTROL

6 FLAME
LEVELS

ECO
WAVE

CE

PREMIUM COLLECTION

Custom-made fireplaces

With the special needs of architects and interior designers in mind, we have created a unique, high-quality made to measure (MTM) range of built-in bioethanol fireplaces.

A large selection of designs, features and finishes provides creative freedom and adds a unique focal point both in the traditional or modern home. Without the need for a chimney, flue or bearing walls, application possibilities for Deco-flame bioethanol fireplaces are countless and

more economical than traditional solutions.

Whether choosing the beautifully crafted manual Deco-flame burner or the elaborate e-Ribbon Fire technology as the 'source of flame', their characteristic wide flame display is guaranteed to impress any viewer.

Our Premium line is all about co-creation and the possibilities are countless with the made to measure options.



Montreal open to 3 sides

With e-Ribbon Fire



BASIC COLLECTION

Ready-made automatic models

Available in three standard dimensions and with a simplified installation process, the electronic burner “Denver e-Ribbon Basic” can be installed as a:

- 1) Drop-down burner installed in a casing, e.g. in the most popular models Montreal or Manhattan.
- 2) In the DecoFlame furniture models such as Torino Multi.
- 3) Drop-down burner installed in a non-flammable material.

Manufactured with high-quality materials, Denver Basic burners can be controlled using the control panel, or optionally, via the DecoFlame App or the remote control which comes with the fireplace.





Manhattan



Denver Basic



Torino

Montreal open to front and back
Montreal open to front
Montreal open to front and 1 side
Montreal open to 3 sides





Foto: HusCompagniet



Foto: HusCompagniet

READY-MADE COLLECTION

Free-standing, wall-hung and ceiling fireplaces

The ready-made collection consists of a large variety of floor, wall- and ceiling mounted models, available in numerous finishes – offering an attractive solution for any taste, room size, layout and ambience.

These fireplaces come with a manual burner in brushed stainless steel with the ability to change the height of the flame with the accompanying burners shutter.

The ready-made bioethanol fireplaces are all convenient to install and easy to fill up with bio-ethanol.

All Decoflame bioethanol fireplaces are tested and manually adjusted in order to guarantee all-times functionality and safety.





OUTDOOR COLLECTION

Ready-made outdoor models

The outdoor collection has been especially designed so the beauty of bioethanol fires also can be enjoyed on the terrace, patio or in the garden.

There are different models, sizes and finishes to select, so finding something that matches the design of one's home is easy.

All of these models are featured with a manual burner, which is easy to fill up and operate.

The burning system allows a controlled combustion that keeps the flames vivid, despite exposure to the elements.

Technically designed and manufactured in Denmark, Decoflame burners match any expectations regards to consistent quality craftsmanship.

These models are also suitable indoor.





Nice Round Table-Top



Nice Series



Dubai Square



Nice Round



BIOETHANOL

A green alternative

All Decoflame fireplaces burns with bioethanol which does not require neither a flue or a chimney.

Bioethanol has a clean combustion releasing only a very small amount of CO₂ and no smoke or soot.

Bioethanol - or simply 'ethanol' is a renewable energy source made by fermenting the sugar and starch components of organic matter - mainly sugarcane, potatoes, beets and crops like grain.

At Decoflame we always recommend using a bioethanol with an alcohol content of 96.5% purity.

Always be aware of the use of bioethanol as it is a combustible product. Please follow the instructions given in order to safely and legally store, handle decant and use this fuel.

However, Decoflame recommends the Decoflame Bioethanol for all electronical fireplaces. Further informations please visit our website.



BIOETHANOL FIREPLACES



ASCOT LUX™

Type: Fireplace insert
 Burner: Manual in BSS
 Dimensions: 462x338x321mm
 562x338x371mm
 662x338x371mm
 Finish: Black



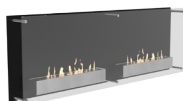
ATLANTIC™

Type: Wall-hung
 Burner: Manual
 Dimension: 700x600x162mm
 Finish: Black + burnercasing: BSS



ATLANTIC TOWER™

Type: Wall-hung
 Burner: Manual
 Dimension: 500x600x162mm
 Finish: Black + burnercasing: BSS



ATLANTIC TWIN™

Type: Wall-hung
 Burner: Manual
 Dimension: 1700x550x162mm
 Finish: Black + burnercasing: BSS



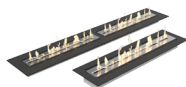
ATLANTIC WAVE™

Type: Wall-hung
 Burner: Manual
 Dimension: 700x600x133mm
 Finish: Black + burnercasing: BSS



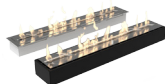
AUSTIN™

Type: Fireplace insert
 Burner: Electronic
 Dimension: 1055x928x350mm
 Finish: Black/white



BASEPLATE™ WITH MANUAL BURNER™

Type: Built-in fireplace
 Burner: Manual
 Dimensions: 900/1000/1450x90x250mm
 Finish: Black/BSS

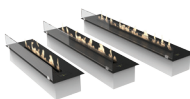


BUILT-IN BURNER WITH LIP™

Type: Fireplace insert
 Burner: Manual
 Dimensions: 545/645/745/845/945x75x142mm
 Finish: Black/BSS

BUILT-IN BURNER WITHOUT LIP™

Type: Fireplace insert
 Burner: Manual
 Dimensions: 545/645/745/845/945x70x142mm
 Finish: Black/BSS



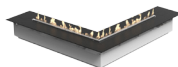
DENVER e-RIBBON BASIC™

Type: Built-in fireplace (3 sizes)
 Burner: Electronic
 Dimensions: 720/920/1120x125x215mm
 Finish: Black



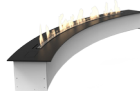
DENVER CLIC™

Type: Built-in fireplace/furniture
 Burner: Electronic · Manual
 Dimensions: Double 2048x366x455mm
 Single 1024x366x455mm
 Finish: BSS in white furniture



DENVER CORNER™

Type: Built-in fireplace
 Burner: E-ribbon
 Dimension: MTM
 Finish: Black/BSS



DENVER CURVED™

Type: Built-in fireplace
 Burner: E-ribbon
 Dimension: MTM
 Finish: Black/BSS



DENVER ELLIPSE™

Type: Table-top
 Burner: E-ribbon
 Dimension: MTM
 Finish: Black/BSS



DENVER E-RIBBON FIRE™

Type: Built-in fireplace
 Burner: E-ribbon
 Dimension: MTM
 Finish: Black/BSS



DENVER ROUND™

Type: Built-in fireplace
 Burner: E-ribbon
 Dimension: MTM
 Finish: Black/BSS



DUBAI ROUND™

Type: Free-standing
 Burner: Manual
 Dimensions: Ø386xH1204mm
 Ø386xH1604mm
 Finish: Black/white/corten



DUBAI SQUARE™

Type: Free-standing
 Burner: Manual
 Dimensions: 400x1201x400mm
 400x1601x400mm
 Finish: Black/white/corten



MONTREAL™

Type: Built-in fireplace, Open to front
 Burner: Electronic · Manual
 Dimension: 800/1000/1200x400x300mm or
 MTM Denver e-Ribbon
 Finish: Black



ELLIPSE CEILING™

Type: Ceiling-hung
 Burner: Manual
 Dimension: 1120x375x400mm
 Standard Ø200xH1500mm tube
 MTM
 Finish: Black/white



MONTREAL™

Type: Built-in fireplace, Open to front
 and back
 Burner: Electronic · Manual
 Dimensions: 800/1000/1200x400x308mm or
 MTM Denver e-Ribbon
 Black
 Finish: Black



ELIPSE FLOOR™

Type: Free-standing
 Burner: Manual
 Dimension: 1120x650x396mm
 Finish: Black/white



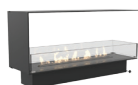
MONTREAL™

Type: Built-in fireplace, Open to 2 sides
 Burner: Electronic · Manual
 Dimensions: 800/1000/1200x400x303mm or
 MTM Denver e-Ribbon
 Black
 Finish: Black



MANHATTAN™

Type: Built-in fireplace
 Burner: Electronic · Manual
 Dimension: 800x1500x300mm or
 MTM
 Finish: Black



MONTREAL™

Type: Built-in fireplace, Open to 3 sides
 Burner: Electronic · Manual
 Dimension: 800/1000/1200x400x308mm or
 MTM Denver e-Ribbon
 Black
 Finish: Black



MEMPHIS™

Type: Built-in fireplace
 Burner: Electronic
 Dimension: 850x394x353mm
 1050x394x353mm
 1250x394x353mm
 Finish: BSS/Black



MONTREAL PANORAMA™

Type: Built-in fireplace, Open to front
 Burner: Electronic · Manual
 Dimension: 2000x400x380mm or
 MTM Denver e-Ribbon
 Black
 Finish: Black



MILANO™

Type: Built-in fireplace
 Burner: Electronic · Manual
 Dimension: 1260x945x330mm
 Finish: Black/white/BSS



NEW YORK EMPIRE™

Type: Wall-hung/built-in
 Burner: Manual
 Dimensions: 1146x590x148mm
 Finish: Black/white/BSS



MONCAO ROUND™

Type: Free-standing
 Burner: Manual
 Dimensions: Ø410xH714mm
 Ø410xH964mm
 Finish: Black/white/BSS



NEW YORK PLAZA™

Type: Wall-hung/built-in
 Burner: Manual
 Dimension: 899x540x149mm
 Finish: Black/white/rusty/polished/BSS



MONCAO SQUARE

Type: Free-standing
 Burner: Manual
 Dimension: 430x725x430mm
 430x974x430mm
 Finish: Black/white/BSS



NEW YORK TOWER™

Type: Wall-hung/built-in
 Burner: Manual
 Dimension: 599x800x149mm
 Finish: Black/white/BSS



NICE BUILT IN™

Type: Built-in fireplace
 Burner: Manual
 Dimensions: Ø338xH353mm / 340x325x340mm
 245x275x245mm
 Finish: BSS



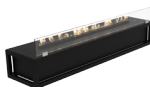
SYDNEY™

Type: Free-standing
 Burner: Manual
 Dimensions: 900x905x300mm
 Finish: Black/white + inside lining:
 Brushed/polished stainless steel



NICE ROUND™

Type: Free-standing
 Burner: Manual in bss
 Dimension: Ø400xH990mm
 Finish: High-gloss: Black/white



TORINO™

Type: Wall-hung
 Burner: Electronic, Denver Basic
 Dimensions: 930x145x225mm
 1130x145x225mm
 1330x145x225mm
 Finish: Black/white



NICE SERIES™

Type: Free-standing (4 sizes)
 Burner: Manual
 Dimensions: 295x745x295mm
 395x985x395mm
 292x480x292mm
 390x630x390mm
 Finish: High-gloss: Black/white



TORINO MULTI™

Type: Wall-hung
 Burner: Electronic, Denver Basic
 Dimension: 2200x268x225mm
 Finish: Black/white



NICE TABLE TOP™

Type: Table-top
 Burner: Manual
 Dimensions: Ø338x358mm / 345x330x345mm
 250x280x250mm
 Finish: White



WESTMINSTER BASIC™

Type: Built-in fireplace
 Burner: Electronic, Denver Basic
 Dimension: 1500x1077x303mm
 Finish: Stone surround;
 Black steel baseplate, BSS frame,
 legs, stripes and spheres



ORLANDO™

Type: Built-in fireplace, Open to front
 Burner: Electronic · Manual
 Dimensions: Electronic: 800/1000/1200x400x300mm
 Manual: 800/1000/1250x400x300mm or
 MTM Denver e-Ribbon
 Finish: Black/Frame: Black/BSS



WESTMINSTER DS™

Type: Built-in fireplace
 Burner: Electronic · Manual
 Dimensions: Electronic 850x760x245mm
 Manual 710x760x245mm
 Finish: Black/BSS



ORLANDO™

Type: Built-in fireplace, Open to front and back
 Burner: Electronic · Manual
 Dimensions: Electronic: 800/1000/1200x400x300mm
 Manual: 800/1000/1250x400x300mm or
 MTM Denver e-Ribbon
 Finish: Black - Frame: Black/BSS



WORLD™

Type: Free-standing
 Burner: Manual
 Dimensions: 900x540x320mm
 1100x660x380mm
 Finish: Black/white/BSS



OUTDOOR BUILT IN™

Type: Built-in fireplace
 Burner: Manual
 Dimension: 980x120x220mm
 Finish: Black/BSS
 Extra: Glass



NEW MONTREAL CLEAR™

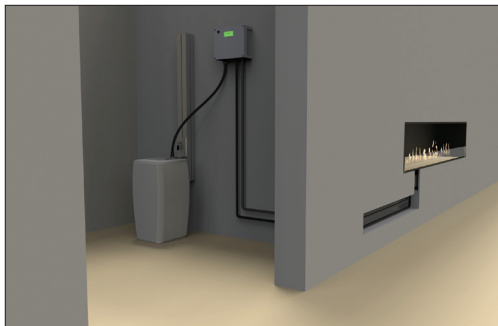
Type: Built-in outer wall
 Brænder: Electronic · Manual
 Dimensions: MTM (min. length 700mm)
 Standard depth 408mm or MTM
 Finish: Black / White / Anodized aluminum
 RAL to order



PARIS™

Type: Built-in fireplace
 Burner: Manual
 Dimension: MTM
 Finish: Black

EXTERNAL FUEL TANK



EXTERNAL TANK FILLING SYSTEM

- Control box + 60 liter plastic tank + Rail guide
- + 5/10/15 meter tubing
- Can be placed in a storage room
- Adapted to all e-Ribbon Fire models
- Safe filling (no spill)
- Extended burning time
- Automatic refilling

GENERAL INFORMATION

- Dimension: WxHxD in millimeters (mm)
- Many of the models are also available as made-to-measure
- Abbreviations: Made-to-measure: MTM / Brushed stainless steel: BSS / Smart Home Connection: SMC
- 3 Burner types:
 - Electronical Denver e-Ribbon burner
 - Electronical Denver e-Ribbon Basic burner (Standard sizes: 720, 920, 1120mm)
 - Manual burner
- The flame tray on the electronical burners is in aluminium.
- Montreal and Orlando:
 - Available in standard sizes with the Denver Basic burner or with a manual burner. Glass included.
 - As made-to-measure. Glass by order.
- The price of the individual products varies depending on the choice of material and / or colour.
- Extra:
 - Many of the models can be manufactured in other finishes / colours than mentioned - price on request.
 - For MTM models the glass can also be ordered in customised dimensions.
 - Glass can be ordered for: New York models / Built-in Burners with and without lip / Outdoor Built-in Burner
 - TV-temp. sensor & Smart Home Connection are only available for Denver e-Ribbon fireplaces.
 - It is possible to order an External Tank Filling System adapted to the Denver e-Ribbon models.
- Bioethanol:
For use and information about bioethanol, please visit our website decoflame.com.
(Please be aware that bioethanol is essential to a proper use and guarantee of your product).